



GYRO TECH™

by NABCO Entrances Inc.

Where quality and service are automatic

WWW.NABCOENTRANCES.COM

1-877-622-2694

JOB NAME: _____

LOCATION: _____

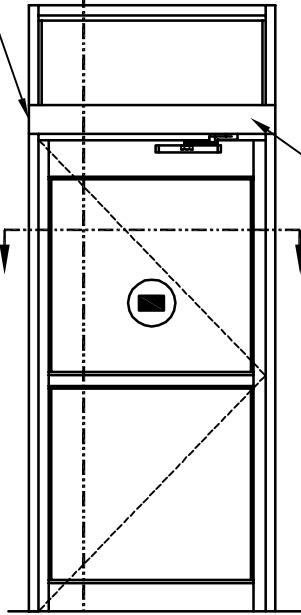
DISTRIBUTOR: _____

DOOR #: _____ DATE: _____

SHEET ____ OF ____

GT8500-01L GT8710-01L SIDELOAD HEADER LEFT HAND INSWING

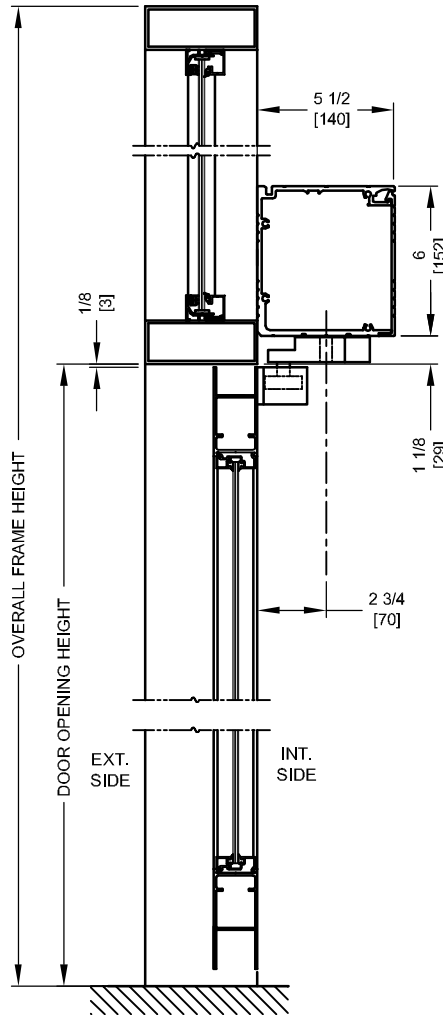
ELECTRICAL POWER SUPPLY
(SEE NOTE 2)



LEFT
HAND
OPERATOR

OPERATOR (INTERIOR) SIDE

INTERIOR ELEVATION



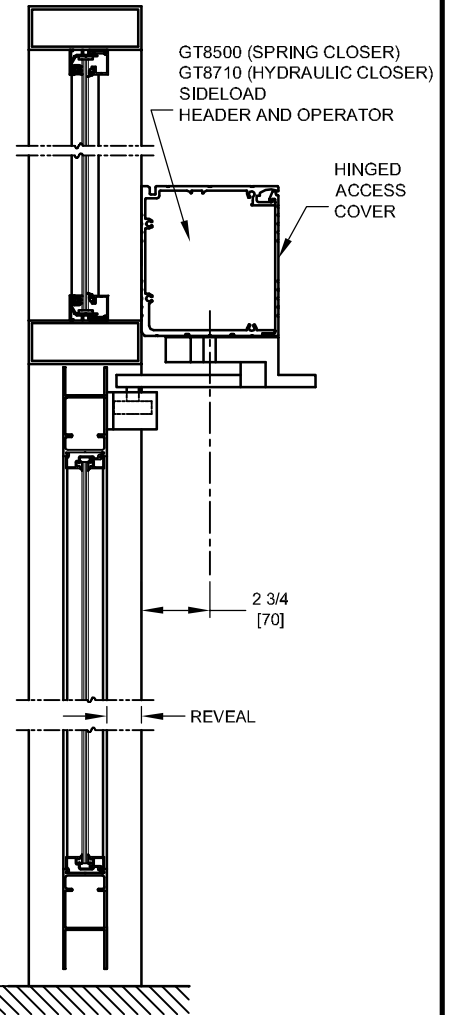
OVERALL FRAME HEIGHT

DOOR OPENING HEIGHT

EXT. SIDE

INT. SIDE

VERTICAL SECTION
BUTT/OFFSET PIVOT OPTION



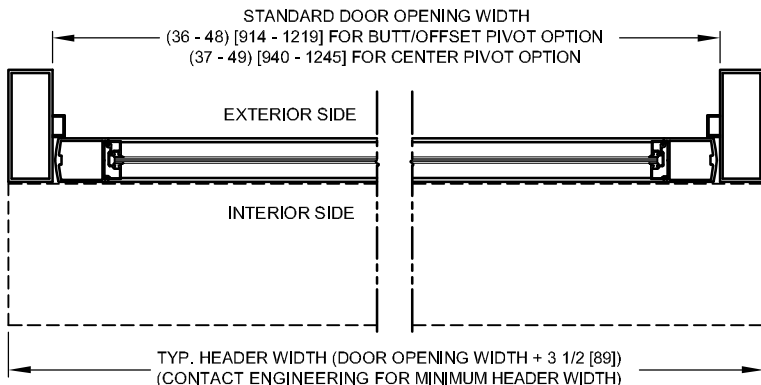
GT8500 (SPRING CLOSER)
GT8710 (HYDRAULIC CLOSER)
SIDELOAD
HEADER AND OPERATOR

HINGED
ACCESS
COVER

2 3/4 [70]

REVEAL

VERTICAL SECTION
CENTER PIVOT OPTION



STANDARD DOOR OPENING WIDTH
(36 - 48) [914 - 1219] FOR BUTT/OFFSET PIVOT OPTION
(37 - 49) [940 - 1245] FOR CENTER PIVOT OPTION

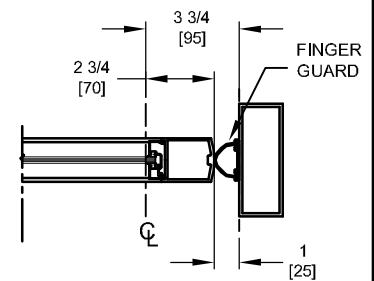
EXTERIOR SIDE

INTERIOR SIDE

TYP. HEADER WIDTH (DOOR OPENING WIDTH + 3 1/2 [89])
(CONTACT ENGINEERING FOR MINIMUM HEADER WIDTH)

HORIZONTAL SECTION

OUTLINE OF SIDELOAD
HEADER AND OPERATOR



3 3/4 [95]

2 3/4 [70]

FINGER
GUARD

1 [25]

HINGE JAMB AT CENTER
PIVOT OPTION

NOTES:

1. GUIDE RAILS, MATS, PUSH PLATES AND VARIOUS ELECTRONIC DEVICES FOR THE DOOR ACTIVATION AND CONTROL ARE OPTIONAL. CONSULT WITH YOUR NABCO/GYRO TECH DISTRIBUTOR.
2. POWER TO HEADER WILL BE 115VAC, 5 AMP PER OPERATOR PROVIDED BY ELECTRICAL CONTRACTOR.
3. STANDARD HARDWARE SUPPLIED WILL ACCOMMODATE DOOR THICKNESS OF 1 3/4" TO 2 1/4".
4. APPLICATION ON BALANCE DOORS REQUIRES RELOCATION OF THE OPERATOR PIVOT.
5. SPECIAL ARMS MAY BE REQUIRED ON INSWING DOORS WITH REVEAL GREATER THAN 1 3/4".

LOW ENERGY